



GMT MONTHLY MEMBERSHIP PROGRESS REPORT

Results as of: 12/31/2017

Multiple District 411

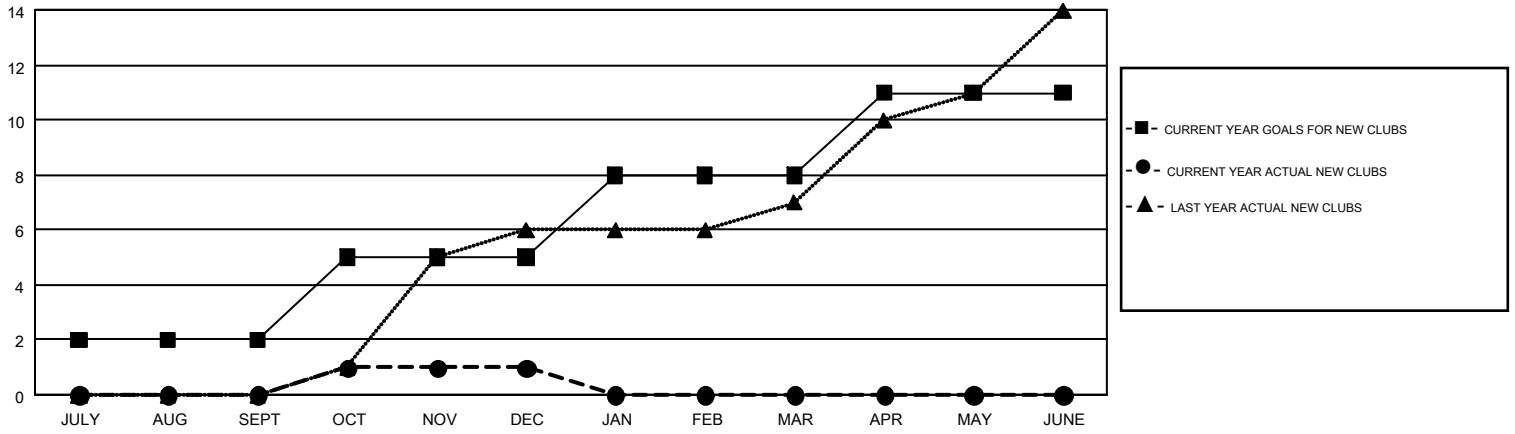
LOCATION: KENYA AFRICA

GMT: KAMAL JOSHI

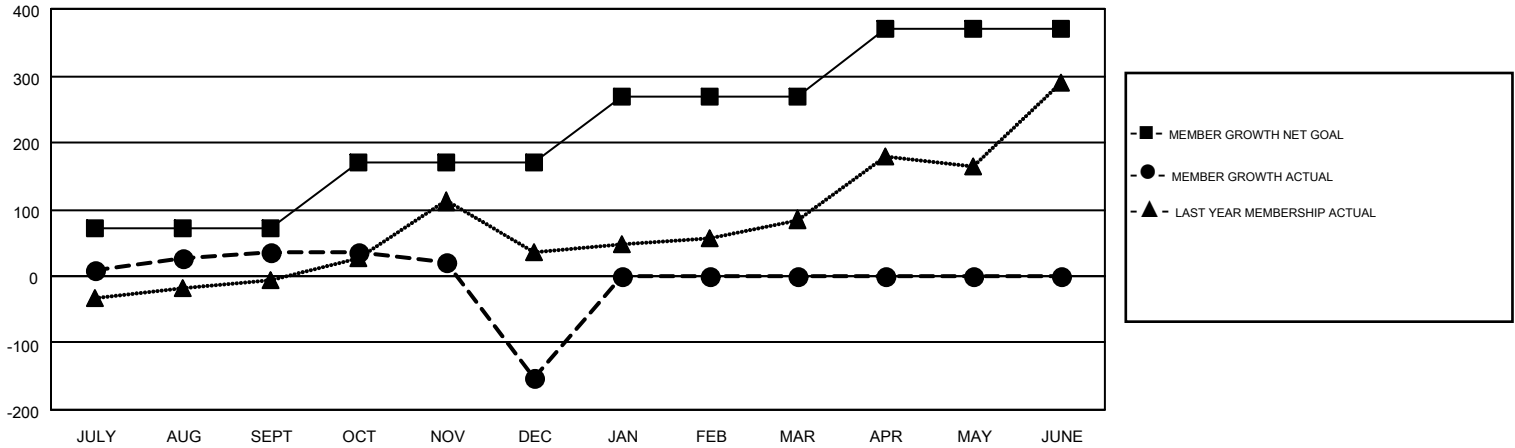
GMT CA 6-Afr

Clubs				Members			
RESULTS FOR 2017-2018				RESULTS FOR 2017-2018			
QUARTER	NEW CLUB GOAL	NEW CLUBS	DROPPED CLUBS	QUARTER	MEMBER GROWTH NET GOAL	MEMBER GROWTH ACTUAL	DROPPED MEMBERS ACTUAL (including transfers)
JULY/AUG/SEPT	2	0	0	JULY/AUG/SEPT	72	112	74
OCT/NOV/DEC	3	1	6	OCT/NOV/DEC	97	91	258
JAN/FEB/MAR	3	0	0	JAN/FEB/MAR	99	0	0
APR/MAY/JUNE	3	0	0	APR/MAY/JUNE	102	0	0

GOALS AND ACTUAL NEW CLUBS CUMULATIVE



GOALS AND ACTUAL MEMBERS CUMULATIVE



DROPPED CLUBS: 6	47 CLUBS OF 126 ADDED 1 OR MORE NEW MEMBERS	<u>GENDER DISTRIBUTION</u>	
<u>DROPPED MEMBERS</u>		MALE	2,004 (63.60%)
DECEASED	9	FEMALE	1,147 (36.40%)
CLUB CANCELLED	104	TOTAL FAMILY UNIT MEMBERS	
OTHER	219	780	
TOTAL	332	FAMILY MEMBERS PAYING HALF DUES	
		439	

[CLICK HERE FOR CUMULATIVE MEMBERSHIP DATA](#)